



SANTA ROSA JUNIOR COLLEGE
STUDENT LIFE
EQUITY & ENGAGEMENT

BASIC NEEDS

STUDENT RESOURCE CENTER |



IMPORTANT UPDATES



New Resources



New Basic Needs
Referral Process



New CalFresh
Eligibility Link



Food Distribution
and Grocery Cards



Student Success
Outcomes

Basic Needs refers to the food, housing, transportation, and overall wellness security of SRJC students. Research has shown that basic needs insecurity has a direct impact on the mental-emotional-physical health and academic performance of students. The Student Resource Center offers wrap around services, programs, and resources that assist students in meeting their basic needs and promotes academic success.

STUDENT RESOURCE CENTER
 resources.santarosa.edu



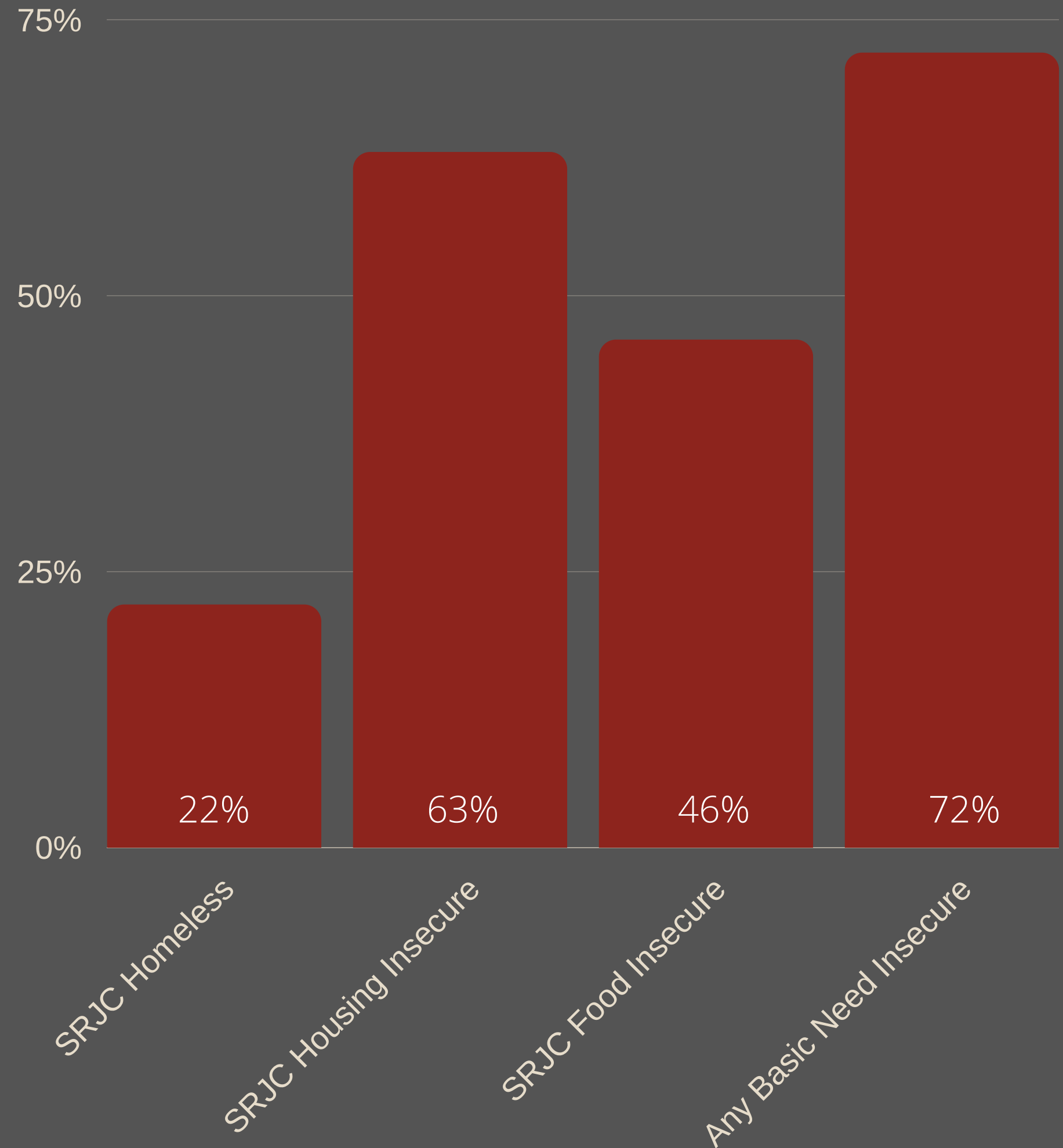
Students are humans first.

DR. SARA GOLDRICK-RAB

UNDERSTANDING BASIC NEEDS

BEYOND THE 'STARVING STUDENT'

The Hope Center provides national, system level, and local data on basic needs in college and universities. (2019)



STUDENT RESOURCE CENTER

FOOD

- Manage SRJC's Food Pantries.
- Promote and support CalFresh
- Provide other local resources.

HOUSING

- Coordinated entry for county-wide emergency housing program.
- Relationships with local property owners.
- Promotes SRJC's third party housing service.

TRANSPORT

- Assist with Any Line, Any Time program promotion and support.
- Provide SRJC Auto Mechanic Program student referrals.
- Relationships with local mechanics.

SUPPORT

- MSW interns provide case management.
- Warm referrals and follow ups.
- Financial literacy and cost of living reduction programs.
- Student engagement and events.



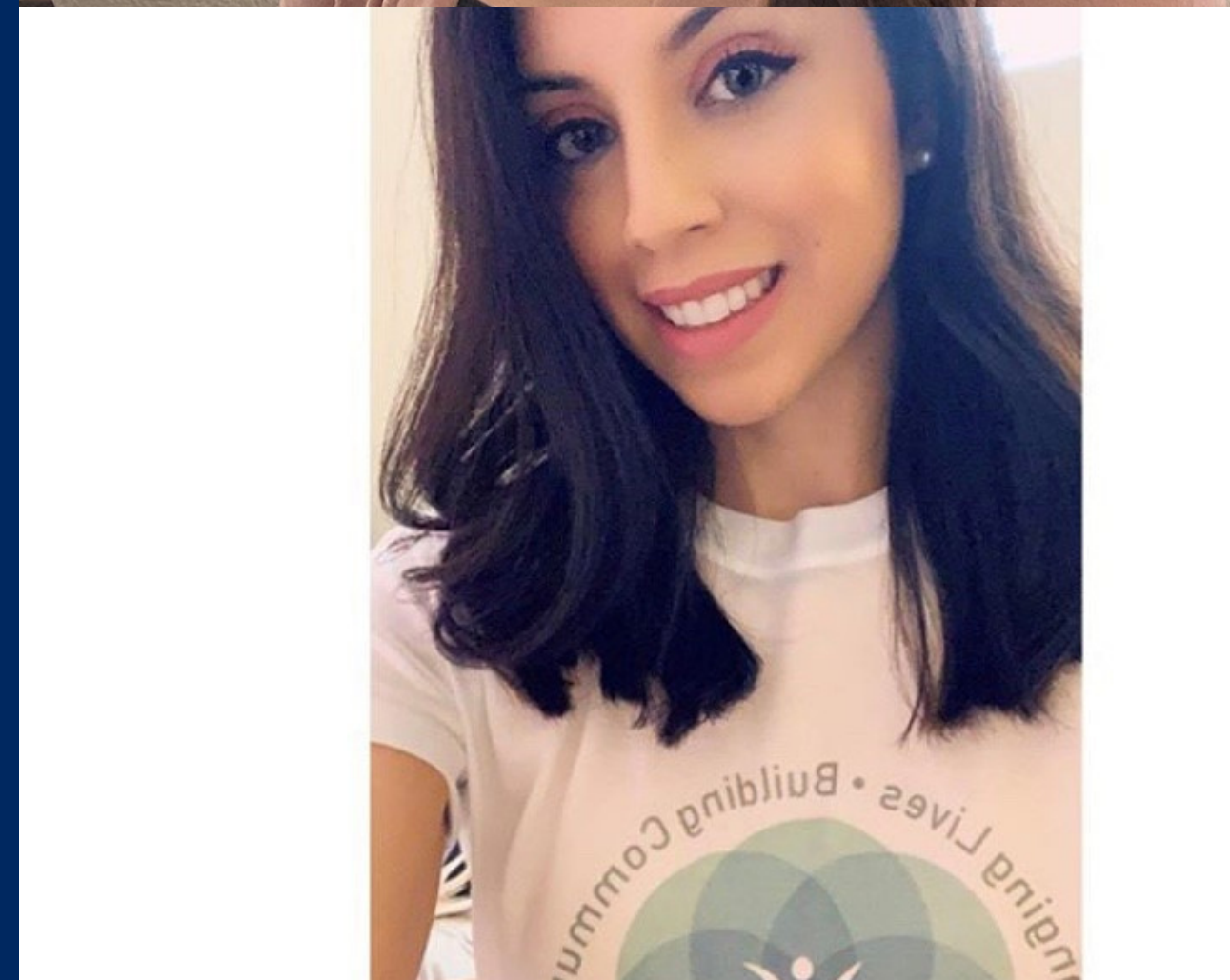
NEW RESOURCES

MSW INTERNS & CASE MANAGEMENT

Perform case management for basic needs support at SRJC, including identifying costs of living reduction programs, public benefits, appropriate program referrals, and providing follow up and tracking.

Support students in navigating college, city, and county resources, including Financial Aid, CalFresh, Coordinated Entry, etc.

Facilitate a “whole student approach” by fostering collaboration, including integrating health and wellness interventions into basic needs services at SRJC.



NEW REFERRAL PROCESS



resources.santarosa.edu

A screenshot of a web browser displaying the Student Resource Centers website. The browser tabs show "Student Resource Centers | Santa Rosa Junior College". The website has a dark blue navigation bar with links: ABOUT SRJC, ADMISSIONS, ACADEMICS, STUDENTS, CAMPUS LIFE, ADMINISTRATION, FACULTY / STAFF, FOUNDATION / ALUMNI. Below the navigation bar is a large banner with a blue circular graphic on the left containing the text: "GIVEAWAY! \$50 GROCERY CARD GIVEAWAY AND GROCERIES. FREE TO ALL CURRENT SRJC STUDENTS." To the right of the graphic, the text reads: "SR CAMPUS - BURBANK CIRCLE 1501 MENDOCINO AVE." and "resources.santarosa.edu". At the bottom of the banner are logos for "REDWOOD EMPIRE FOOD BANK" and "SANTA ROSA JUNIOR COLLEGE STUDENT LIFE EQUITY & ENGAGEMENT". Below the banner is a "NAVIGATION" section with a "Home" link. To the right is a "STUDENT RESOURCE CENTER" section with a "WELCOME" heading. The text below the heading says: "The SRJC Student Resource Centers are here to support you to find housing, transportation, food resources, homeless diversion, options for our homeless students, ways to reduce your cost of living and so much more. Currently, we are only available by phone or video appointments, please see the links below." Below this text is another paragraph: "We are holding virtual appointments if you need to speak with someone. If you are a student with significant basic needs insecurity please fill out the form below so we can get you connected with the Student Resource Center case managers." Below the paragraph is a dark red button with the text "BASIC NEEDS SELF REFERRAL FORM". A large red arrow points from the button towards the left side of the page.

CALFRESH OUTREACH GRANT

2018
CALFRESH
GRANT AWARD

In partnership with Student Health Services, Student Equity awarded a \$334K

2019
CALFRESH
YEAR ONE

Delayed due to governmental shut down and federal politics.

2020
CALFRESH
YEAR TWO

CalFresh Basic Needs Navigators program established.

2021
CALFRESH
YEAR THREE

Program improvements - improved physical and digital presence and better case management.

2022-2024
CALFRESH
GRANT

New grant submitted in Sept 2020 for \$575K.

BASIC NEEDS NAVIGATOR



AMANDA
NASCIMENTO

CalFresh
Basic Needs Navigator



GIGI
WILLIAMS

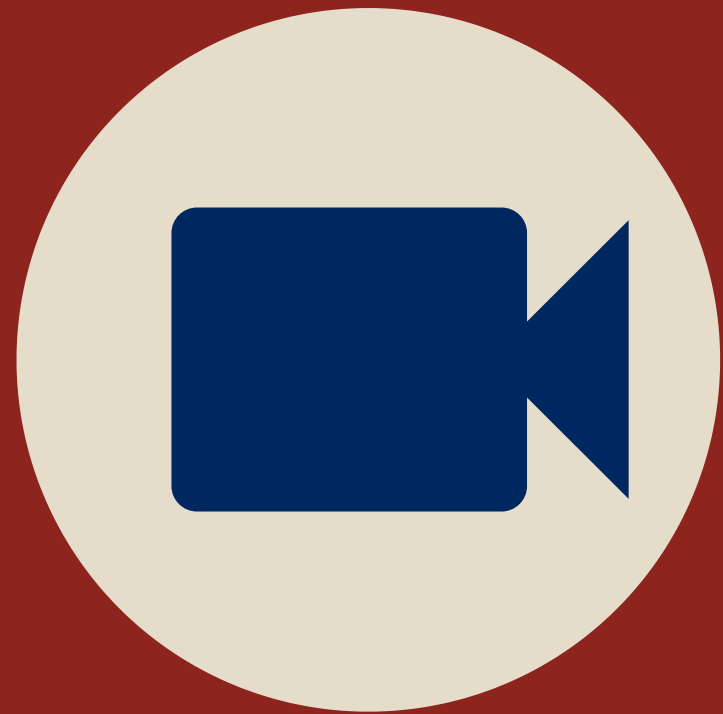
CalFresh
Basic Needs Navigator



BENJAMIN
ROSEL

CalFresh
Outreach Technician

NEW WAYS TO GET SUPPORT



resources.santarosa.edu



"IT'S LIKE FINANCIAL AID FOR FOOD!"

Get CalFresh!

THREE WAYS TO GET SUPPORT @
SANTA ROSA JUNIOR COLLEGE

1

ONLINE ELIGIBILITY FORM

START HERE TO FIND OUT IF YOU QUALIFY!

[RESOURCES.SANTAROSA.EDU/CALFRESH-PRESCREEN](https://resources.santarosa.edu/cal-fresh-prescreen)

2

ZOOM DROP IN HOURS

TUESDAY: 10AM - 12PM

WEDNESDAY: 1PM - 3PM

MEETING ID: 707-527-4888

3

BY APPOINTMENT

EMAIL: CALFRESH@SANTAROSA.EDU OR

[CALENDLY.COM/GETCALFRESH/SUPPORT](https://calendly.com/getcalfresh/support)



NEW CALFRESH ELIGIBILITY LINK



de Preser x | Student Resource Centers | Santa x | CalFresh Outreach | Student Reso x | +

ABOUT SRJC | ADMISSIONS | ACADEMICS | STUDENTS | CAMPUS LIFE | ADMINISTRATION | FACULTY / STAFF | FOUNDATION / ALUMNI

GIVEAWAY!
\$50 GROCERY CARD
GIVEAWAY AND
GROCERIES. FREE TO
ALL CURRENT SRJC
STUDENTS.

SR CAMPUS - BURBANK CIRCLE
1501 MENDOCINO AVE.

resources.santarosa.edu

REDWOOD EMPIRE
FOOD BANK

SANTA ROSA JUNIOR COLLEGE
STUDENT LIFE
EQUITY & ENGAGEMENT


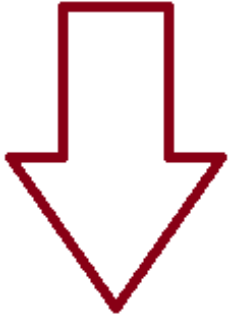
NAVIGATION

- Home

SERVICES

- Homelessness
- Food Resources
- Get CalFresh
- Feed the Bears Virtual Food Pantry
- Housing
- Transportation
- Volunteer

CALFRESH OUTREACH



Find Out if You're Eligible **Application Process** **Market Match**

CalFresh is a nutrition assistance program that helps low-income individuals and families buy the food they need. Recipients receive and "spend" CalFresh benefits electronically, via Golden State Advantage cards that work like debit cards. CalFresh benefits can be used at grocery stores and farmers markets. You don't have to choose between textbooks or a meal- make an appointment with us today and you can get extra help with your expenses!

resources.santarosa.edu/calfresh

CalFresh Support



OUTREACH & ELIGIBILITY

The CalFresh Outreach Team performs a variety of outreach activities where students are 'pre-screened' for eligibility.



APPLICATION SUPPORT

BN Navigators provide opportunities for support including zoom drop in, events, appointments, & social media education.



PHONE INTERVIEW

Approximately 7 days after the application is complete the student receives a phone interview from the county.



EBT CARD ARRIVES

Approximately 2-4 weeks. Can be used for most food items, pet food, supplements, but not prepared foods.

FOOD DISTRIBUTIONS

Every third Monday, from 9am - 10am
SR Campus

Includes pantry groceries and a \$50 grocery gift card.

Open to all currently enrolled students.

Served approx. 300 households. November will include Shone Farm.

FREE FOOD DISTRIBUTION & GROCERY CARD GIVEAWAY!

\$50 GROCERY CARD
GIVEAWAY & GROCERIES.
FREE TO ALL CURRENT
SRJC STUDENTS.

NOVEMBER 16, 2020
9 AM - 10 AM
SANTA ROSA CAMPUS
1501 MENDOCINO AVE.

resources.santarosa.edu



SANTA ROSA JUNIOR COLLEGE
STUDENT LIFE
EQUITY & ENGAGEMENT



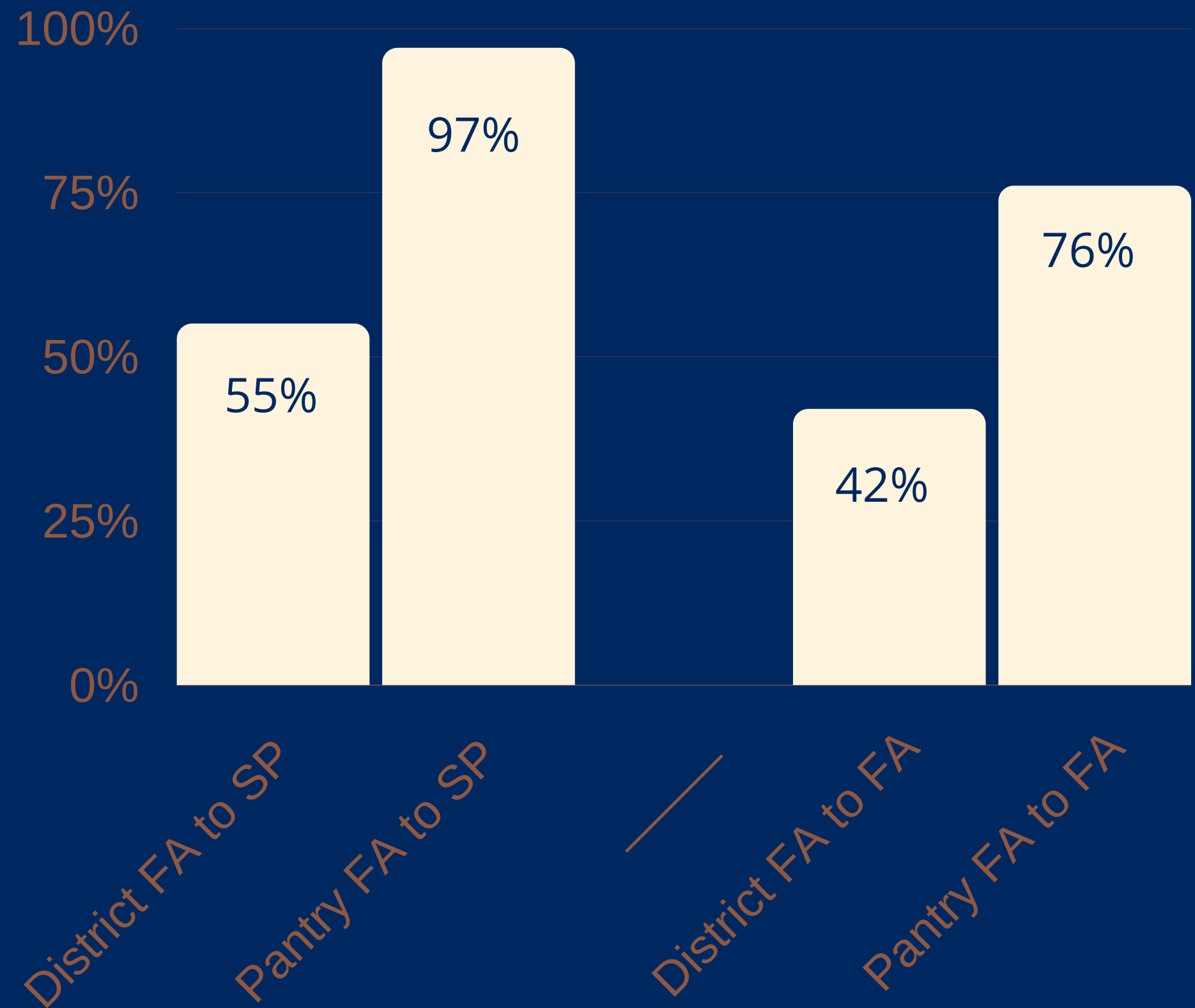
97%

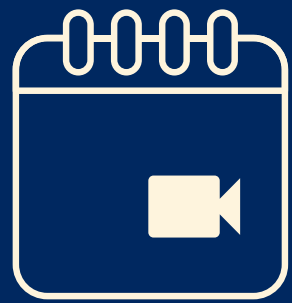
**STUDENT
SUCCESS**

FOOD PANTRY PARTICIPANTS PERSISTED
FALL TO SPRING.

STUDENT SUCCESS OUTCOMES

2019-2020 PERSISTENCE RATES

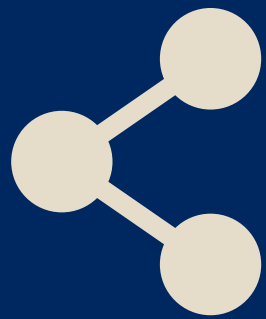




APPOINTMENTS

Zoom ID / Phone: 707-527-4888

calendly.com/getcalfresh/support



SOCIAL MEDIA

@calfreshsrjc

www.facebook.com/calfreshsrjc/



EMAIL ADDRESS

calfresh@santarosa.edu

studentresourcecenter@santarosa.edu



**STUDENT LIFE, EQUITY, AND
ENGAGEMENT**

THANK YOU!

END OF DRAFT

THE REMAINING SLIDES

Are just here as place holders or design ideas.

SAME HERE

Presentations are communication tools that can be used as demonstrations. Make them good!

SUPPORT ON/OFF CAMPUS



Raise Awareness & help understand eligibility and enrollment process



Community & campus Assistance with application



Creating meaningful partnerships with except programs & campus recourses



Hosing Events such as CalFresh Day, Drop in events, 1:1 student support & more



Supporting our campus food pantry & REFB Food Distribution

Reviews



CHESCA CLARKE

UX Designer

Presentations are tools that can be used as demonstrations.



FIONA LUGOS

Law Student

Presentations are tools that can be used as demonstrations.



FABIAN ALEXAN

Chief Executive

Presentations are tools that can be used as demonstrations.

ACHIEVEMENTS

INNOVATING SINCE 2009

Presentations are communication tools that can be used as demonstrations, lectures, speeches, reports, and more. Most of the time, they're presented before an audience.





**DISTRIBUTED OVER XXX LBS OF FOOD.
DISTRIBBUTED 166 GROCERY GIFT CARDS**

TARGET SALES

Presentations are communication tools.



Free Resources

Use these free, recolourable icons and illustrations in your Canva design.

